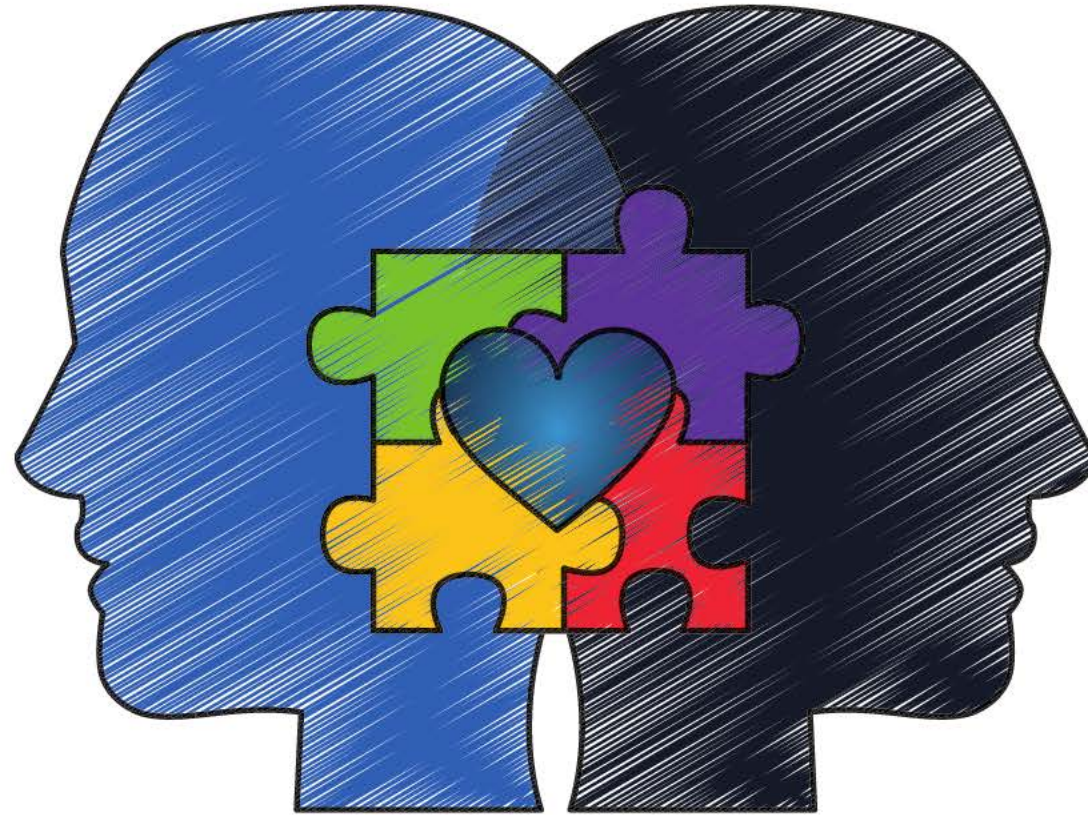


Adulthood and Young Adult

SERVICES AND SUPPORTS





Who We Are

Cross Plains is a local non-profit that has served Northwest GA for over 60 years. We provide day and employment services for individuals with intellectual and developmental disabilities.

Cross Plains Community Partner provides services through a person-centered approach, focusing on the gifts and abilities of each person and creating opportunities for people to have a meaningful life.

By empowering people to contribute, we hope for a community of inclusion for all.

To further this commitment, Cross Plains contracts with the Department of Behavior and Health and Disability Services and Georgia Vocational Rehabilitation.



Mission:

To be a partner in creating a community where all people have the opportunity for choice, leadership, and employment.



Vision:

Every individual at CPCP being able to say, "I am an important part of my community".

Who is involved?



Where do I start?

- An overview of (DBHDD) the Department of Behavioral Health and Developmental Disabilities Services
-
- (GVRA) Georgia Vocational Rehabilitation Service.
-



Get familiar with your options

- What is the role of the Department of Behavioral Health and Developmental Disabilities (DBHDD)?

DBHDD provides services for people with intellectual and developmental disabilities that need long-term supports. DBHDD provides funding through Medicaid waivers for people with DD/IDD.

- What is the role of Vocational Rehabilitation Agency(GVRA)?

GVRA assist with a variety of work-related training options for individuals to have opportunities to learn about work and/or training skills that are needed to be successful in the workplace.



DBHDD

DBHDD supports individuals across the state and provides opportunities for individuals to live and work independently in the most integrated setting possible. This division of DBHDD works with provider agencies, advocates, and families to access quality services.

Services are funded through state dollars and two types of Medicaid Waiver(s):

- **New Options Waiver (NOW)** and
- **Comprehensive Waiver (COMP)**

The (NOW) waiver supports individuals to remain living in their home with family to participate or live independently in the community.

The (COMP) waiver serves people with more intensive needs.



Some services under the NOW/COMP Waivers:

- Respite
- Community Access
- Community Residential
- Supported Employment
- Community Living Support
- Environmental Accessibility Adaptations
- Specialized Medical Supplies & Equipment

PROCESS WHEN APPLYING WITH DBHDD



1 - Contact the Regional Office.

Apply for services by submitting the application.

2 - I&E Team

The intake and evaluation team determines eligibility.

3 - If eligible

You will be placed on short or long term planning list.

4 - When funding is available

The specific waiver type is assigned. You will receive a letter from the regional office stating approval of the waiver.

5 - Next 30 days

Within 30 days of a waiver being assigned, you will choose a support coordination agency. If you do not make a selection, one will be assigned.

PROCESS WHEN APPLYING WITH DBHDD



6. Short-Term vs. Long-Term

- Short-Term- List designed for people who need waiver services immediately.
- Long-Term- List is designed for people needing waiver services at some point in the future.

7. Meet with Intake & Evaluation Team with the Planning List Administrator

The I&E team meets with the individual to complete the paperwork:

- social history
- psychological update
- a nursing assessment
- other Medicaid documents

8. PLA (Planning List Administrator) to complete paperwork

- ISP (Individual Support Plan)
- SIS (Support Intensity Scale)
- HRST (Health Risk Screening Tool) assessments to be completed.

9. Provider(s)

- Choose a provider to render services and supports.
- After the ISP, and once funding is determined, the Planning List Administrator will help move forward with the service provider.

GVRA Vocational Rehabilitation

The Georgia Vocational Rehabilitation Agency operates five integrated and interdependent statutory programs that share a primary goal - to help people with disabilities to become fully productive members of society by achieving independence and meaningful employment. The largest of the programs is Vocational Rehabilitation (VR) Program- (website)



Some services under GVRA:

- Job Coaching
- Customized Employment
- Work Place Readiness
- Traditional Supported Employment

- ●

Cross Plains' Goals Moving Forward



Pre-employment Services

Creating an expectation around employment for those exiting high school. This also can translate into other needed services.



Supported Employment

This service provides on-going and other appropriate supports that assist an individual in entering and maintaining integrated employment.



Day Services

Most of our services are provided through a community-based model. Our facility is mainly a transportation hub as people are going into the community to work, volunteer, and recreate.



Wrap around Services

To create a blend of services, we have many people that will utilize multiple services. This concept includes community based, supported employment, and any other services that support the person most.

PRE-EMPLOYMENT SERVICES



Summer Program
GROW with GVRA(2021)

One-week, intensive training that includes: job readiness training, self-advocacy, job exploration, work-based learning, and counseling on post-secondary enrollment.



Project SEARCH HMC
(Hamilton Medical Center)

Nine-month internship for young adults with disabilities that involves full immersion into the workplace (last year of high school).



Project SEARCH
Shaw Industries
(Post-secondary option)

Nine-month internship for young adults with disabilities that involves full immersion into the workplace (post-secondary).



Dalton High School
Transition Academy (TA)

The Transition Academy is a program for students who have participated in an alternate curriculum in high school and have earned their required 24 credits. The TA will provide students with an opportunity to improve their job readiness skills, increase their independence, and facilitate their move from school to adulthood.



Full-time or part-time work (can include self-employment).



The workplace is in a community.



The person receiving supports works and interacts with coworkers who do not have disabilities .

Everyone can work when they have the right supports. SE focuses on everyone's talents, skills, abilities, and preferences!

Supported Employment

Supported Employment is a service that assists an individual in obtaining competitive work performed in an integrated work setting. It assists individuals in finding employment based on personal interests, skills, and abilities.



May 2018 -Georgia becomes an employment first state.

DAY SERVICES

Services provided in the community using person-centered thinking to decide day to day routines.

A circular graphic with a teal center and a white outer ring. The ring is composed of several teal-colored segments separated by white gaps, creating a fragmented or 'broken' circle effect.

Community Based Model

Connecting individuals to their local communities where they have opportunities to have meaningful days.

A circular graphic with a teal center and a white outer ring. The ring is composed of several teal-colored segments separated by white gaps, creating a fragmented or 'broken' circle effect.

Community Immersion

Being active and present in the community and engaging in activities identified through utilization of person-centered thinking tools.

WRAP AROUND SERVICES

Day Services & Supported Employment



Tips to remember when going through the process of applying for Services:



-
- ◆ Never assume it is too early to apply.

School systems may start to help students apply as early as 8th or 9th grade. Be aware that this is a good thing.

-
- ◆ Think long-term regarding services.

Know that initially you can start with the services you are most interested in, such as employment and community based services; however, as the adult ages, you may want to consider other services. It always important to think long-term regarding services not just what services are needed presently.

-
- ◆ Follow-up with DBHDD and check the status of application as needed.

If eligibility is approved, and the individual is on the planning list, make sure to begin calling the regional office as graduation approaches. This will help make the transition more seamless from high school to adult services.



What does success look like?

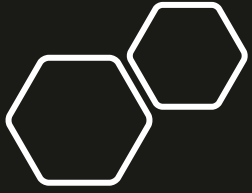


<https://vimeo.com/329417976>



Do you have
any questions?





For questions or further information:

**Georgia Department of Behavioral Health and
Developmental Disabilities
(DBHDD)**

<https://dbhdd.georgia.gov/>

Primary/Main Number: (404) 657-2252

**Division of Intellectual and Developmental Disabilities:
(404) 232-1912**

